

Excursions

28 June (Wed.)
14:10-18:30

ISIT 2023 offers 4 optional excursions and few attraction/tour information for our participants, kindly refer to the following pages.

Excursions	Price / Per Person
Excursion A: Cultural Experience in Dadoucheng	TWD\$ 1,500
Excursion B: Historical Tour in Tamsui	TWD\$ 1,500
Excursion C: National Palace Museum Treasures Tour	TWD\$ 2,000
Excursion D: Tea Tasting Experience in Maokong	TWD\$ 2,000

Notes:

- Excursions must register with the main conference before **18 June 2023**. Refund and cancellation policy follow the main conference.
- Each excursion requires a minimum of **10 persons**. If the excursion you select cannot reach the minimum numbers or exceed the maximum capacity, you will be offered an alternative excursion of equal value or full refund.
- Excursion D: Maximum **30 persons**.
- Departure from / Return to Taipei International Convention Center (TICC)

Attractions/Tours
Taipei 101
SongShan Cultural and Creative Park
Discovery Center of Taipei
Taipei Confucius Temple & Dalongdong Baoan Temple
Easy Cycling Tour along Taipei's Riverside Bikeway
Taipei Sightseeing Bus

More Information

- [Travel Taipei](#)
- [Taiwan Tourism Bureau](#)

Excursion A: Cultural Experience in Dadoucheng

TWD\$ 1,500 (Per Person)

TICC→Dadaocheng District →Dadaocheng Wharf→TICC



Dadaocheng

In late 1880s, Dadaocheng started to prosper in light of the opening of Tamsui Harbor. It has since become the keystone of economic and cultural development. In Dadaocheng, you will see extravagant Baroque architecture, traditional Hokkien bungalows and brilliant red-brick western houses. Historical buildings, traditional folklore center, tea houses, fabric stores, Chinese pharmacy and local eateries alike are rich in history. A new everyday-aesthetics derives in the vintage neighborhoods of Dadaocheng where century-old stores meet with contemporary innovation.



Taipei Xia-Hai City God Temple

Built in 1856 (6th year of the Xianfeng reign in Qing dynasty), Taipei Xia-Hai City God Temple is a renowned religious center that takes up an area of 149 square meters where you can always see an endless stream of pilgrims. Other than City God, the Matchmaker, deity of love and marriage is definitely the most visited deity by tourists. More than 6,000 couples came with tributes to return the Matchmaker's favor each year. The most wanted item here is the Yu Fu Shoes (husband-harnessing shoes). It is a renowned love amulet in Taipei City which is also referred to as the shoes of happiness.

Yongle Fabric Market

The next stop is Taipei's biggest fabric market—Yongle Fabric Market. From sewing kits to unusual textiles, if you are a handicraft lover, you can find almost everything you need here. In the old days, people would buy apparel fabric to make new clothes for family members before Lunar New Year. It was believed wearing new clothes would bring good lucks for the coming year.



Shin Hong Choon Tea

“Shin Hong Choon Tea” was built in 1934 by a Dadaocheng tea merchant who came to Taiwan to seek business opportunities. The building of the Japanese colonial period that incorporates the features of eastern and western architecture is one of the few completely preserved mansions in Taipei City that serve both residential and commercial purposes. It was designated as a municipal historic site in 2009. Targeting domestic and overseas visitors, the tea shop is converted into a four-in-one hybrid space, with zones including “books, cultural and creative products, tea drinking, and exhibition” for visitors to better understand Dadaocheng and glimpse the history of Shin Hong Choon Tea during the first half of the 20th century.



Excursion B: Historical Tour in Tamsui

TWD\$ 1,500 (Per Person)

TICC → Tamsui Historic Sites → Tamsui Old Street → Return by MRT



Tamsui Old Street

Tamsui used to be called Huwei. It is a derivation from the ancient tongue "Hoba." It means the river outlet. Tamsui is located in northwest of Taipei basin. Tamsui is surrounded by mountains and rivers and the scenery is beautiful.



Tamsui Old Street is divided into the inner and outer side. The outer street is the golden anchor walkway of Tamsui river coast, while the inner side is a traditional old street lined with bustling shops. There are faithfully traditional pastry shops, groceries and stores selling trendy outfits and toys. The popular foods in the area include A Gei, fish ball, fried fish crackers, traditionally baked cake, Granny's iron eggs, etc. are all must try goodies. In the evening, the beautiful scenery of the sun setting below the ocean horizon can be seen along the golden anchor walkway.



The must try local snack "A-Gei" is transliterated partly from the Japanese word of "Oiled Tofu". Prepared by emptying the center of the Tofu, adding fried clear noodles and soaking in marinade, then sealed off with fish mince and steamed. Sweet sour sauce or secret recipe of the store is poured on top before serving.

Hobe Mackay Hospital / Tamsui Church / Oxford College

The influence of foreign involvement in Taiwan can be seen in the works of George Leslie Mackay, a Canadian missionary venerated in Taiwan for his good work in the fields of religion, education, and medicine. Mackay was born in Oxford, Ontario, of a Scottish immigrant family in 1844. He came to Taiwan in 1871 as a member of the Canadian Missionary Society. He worked first in Kaohsiung in southern Taiwan. After learning elementary Taiwanese, he moved north to Tamsui in 1872 where he preached the gospel to the local inhabitants. Although there was considerable resistance to his efforts, he gathered a sufficient number of disciples to establish the Tamsui Church, northern Taiwan's first church. Mackay also worked to improve education and health among the local population. He established a number of important institutions that are still in existence today. These include the Mackay Hospital, Tamsui Girl's School (the first school for girls in Taiwan) and Oxford College.



Excursion C: National Palace Museum Treasures Tour

TWD\$ 2,000 (Per Person)

TICC → Taipei National Palace Museum → The Grand Hotel → TICC



Taipei National Palace Museum

The Taipei National Palace Museum is the world's largest collection of priceless Chinese art treasures, one which spans China's nearly 5,000-year history. Most of the museum's over 600,000 art objects were part of the Chinese imperial collection, which began over 1,000 years ago in the early Song dynasty.



In WWII, Nationalist troops seized the most important pieces in order to prevent invaders from ransacking China's national treasures. A twist of fate eventually brought these treasures to Taiwan.



The Taipei National Palace Museum is designed in the style of a Northern Chinese palace. The museum is home to hundreds of thousands of historical relics that make up the world's most comprehensive and precious collection of ancient Chinese artifacts. The entire collection covers 5,000 years of China's historical and artistic achievements.

The Grand Hotel

Established in 1952, the Grand Hotel is a 14-story palatial building towering on the hillside of Yuanshan and surrounded by Keelung River in the front, Mt. Yangmingshan in the back, Songshan to the east and Tamsui to the west. With its signature red columns and golden roof, the hotel's magnificent exterior presents a sumptuously classic ambiance that reflects the beauty of traditional Chinese arts. The hotel is one of Taipei City's world-renowned landmarks, and also the premium choice for travel accommodation or business conferences for people worldwide.



The beauty of the Grand Hotel comes from its stately Chinese-style structures and splendid classic setting; the mystique of the hotel lies in its legendary, historic significance and the rumor about a secret underground passageway; one can chalk the hotel's otherworldly serenity to its great location, adjacent to a scenic belt away from the urban bustle.

Excursion D: Tea Tasting Experience in Maokong

TWD\$ 2,000 (Per Person) (Maximum 30 persons)

TICC → Maokong Tea Farm & Tea Tasting → TICC

Maokong

Maokong is an area southwest of Getou Mountain in the Muzha District, on the outskirts of Taipei. Maokong refers to the lands in the valley around the Tea Research Center. One can see potholes in the area's streams, which are the erosional result of swirling sand and gravel. These formations are called "Lokang" (wrinkled hole) in the Taiwanese language. Japanese authorities during the colonial era gave it a similar-sounding name of Maokong. The area's closeness to National Chengchi University led to economic development, as students would often visit in the evening. This helped spur Maokong's very special brand of tea tourism.

The tea farms here are famous for Bouzhong tea and Taiguan Ing. There are many teahouses with diversified styles. They are good places to visit no matter during day or night. In the daytime, there are tea trees and hills forming green scenery. Many citizens visit the place by taking the mountain tracks. After dusk, Maokong is like an enchanting, mysterious lady. Colorful light bulbs are lit in front of every building. Visitors taste tea, chat with each other and admire the nightfall. Sometimes groups of young people have parties and the laughter brings a touch of vigor to Maokong.

The tea farms (open for sightseeing) are scattered around Lane 34, 38, 40 of Zhinan Road, Sec. 3, and the former half of Zhinan Road, Sec. 3. Most tea farms provide tea tasting or meals. Recently, the sightseeing industry blooms here. Many residents develop other means of livelihood other than tea farming. For example, they raise mountain chickens or provide country cuisine. Visitors coming here may also want to try the delicious dishes.



TAIPEI 101

TAIPEI 101

Located in the finest district Taipei has to offer, TAIPEI 101 is the largest engineering project ever in the history of the Taiwan construction business. Supported by a dozen or so domestic businesses, the TFC Corp. was fortunate to have local and international experts in charge of the planning, and world-class architect C.Y. Lee was responsible for the design of the project. The design transcends the unit-body concept and is based on the Chinese number 8, a numeral long considered lucky in Chinese culture. Eight-floor structural units are connected one by one on top of each other to form the whole. This kind of rhythmic aesthetic is new to skyscrapers.



TAIPEI 101 Observatory

At 382 meters above the ground the 89F Observation Floor offers visitors a commanding view of the city and Taipei Basin at all directions. The damper, weighing 660 metric tons, is also exhibited at this level. The Observatory is equipped with high-power binoculars, drinks bar, image services, pre-recorded audio tour guides in seven languages, & souvenir shops.

Website: www.taipei-101.com.tw/en/

Address: No. 7, Sec. 5, Xinyi Rd., Xinyi Dist., Taipei City

MRT: Red Line (Tamsui-Xinyi): Taipei 101 Station, Exit 4

Taipei 101 observatory

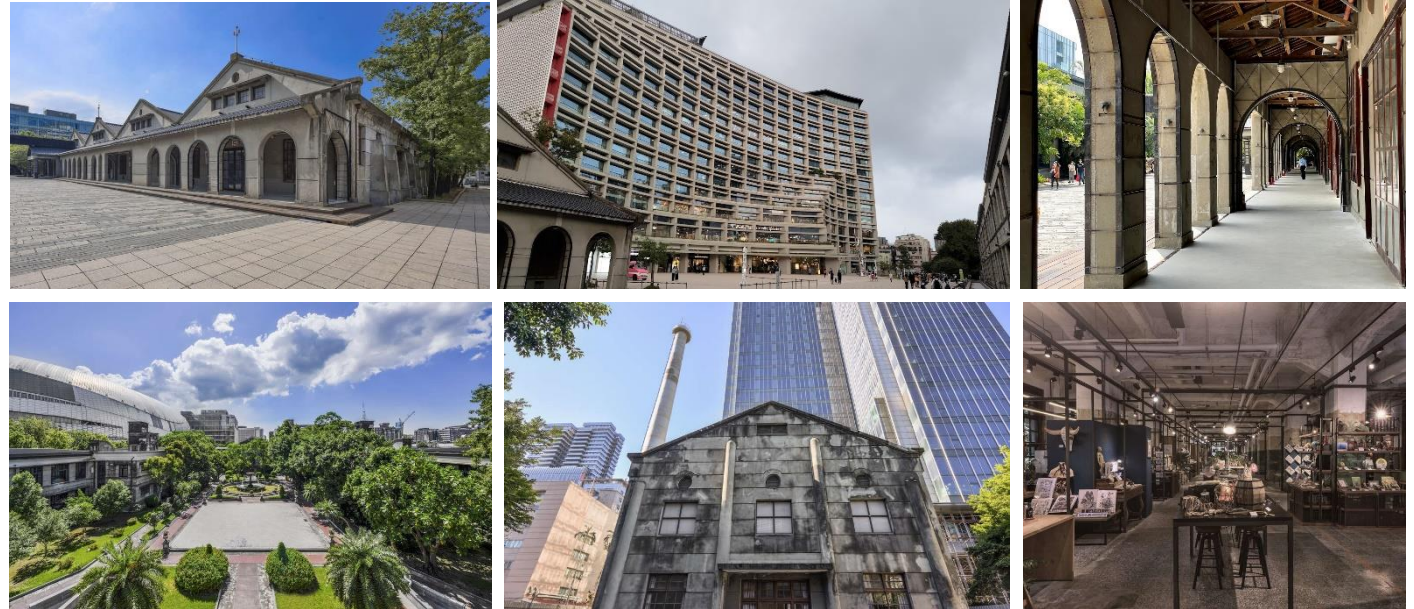
- Opening Hours: Monday-Sunday 11:00-21:00, Last Admission 20:30
- Ticket:
Main Deck (89th Floor Observatory) Adult TWD\$ 600 / Concession TWD\$ 540
More ticket information: www.taipei-101.com.tw/en/observatory/ticket

SongShan Cultural and Creative Park

SongShan Cultural and Creative Park

The 6.6-hectares Songshan Cultural and Creative Park in Taipei's Xinyi District was completed in 1937 as the Songshan Tobacco Factory, which was one of the seed companies of a monopoly system mandated by the Taiwan Governor-General Office. The premises were one of Taiwan's pioneers of modern industry, as well as the first professional tobacco plant. A gracefully simple Japanese modernist structure, the factory features meticulously crafted face cams, glasswork and bronze nails that made it arguably a "model factory" at that time. When Japan lost the war in 1945, the Taiwan Provincial Monopoly Bureau took over the factory and renamed it, Songshan Tobacco Factory of Taiwan Provincial Monopoly Bureau. The factory ceased production of cigarettes in 1998 for concerns over urban planning, regulatory changes in the tobacco and liquor marketing system, as well as shrinking demand. It became a relic of the past after being merged into the Taipei Cigarette Plant.

In 2001, the Taipei City Government named the tobacco factory the city's 99th historic site and converted it into a park comprising city-designated historic sites (namely the office building, the 1st to 5th warehouses, cigarette plant and boiler room), historic structures (the inspection room, a machinery repair shed and a nursing room) and architectural highlights (the Baroque-style garden, an ecologically landscaped pond, a public bath and a multi-purpose auditorium). For more efficient reuse of space, the Songshan Cultural and Creative Park was built on the historic site as a production base for designers and cultural & creative businesses, as well as a venue for performances and exhibitions.



Website: www.songshanculturalpark.org/english

Address: No.133, Guangfu South Road, Xinyi District, Taipei City

MRT: Blue Line (Bannan)

- Route 1: To Sun Yat-Sen Memorial Hall Station → take Exit 5 then follow the sign of Songshan Cultural and Creative Park walking for 7-10 minutes → turn right to SongYan Avenue to the main entrance of the Park
- Route 2: To Taipei City Hall Station → take Exit 1 (with stairs) or Exit 2 (with escalators) → walk about 10-15 minutes and turn right to Lane 553, Section 4, Zhongxiao East Road, the Park is at the left-hand side

Discovery Center of Taipei

Discovery Center of Taipei

The Discovery Center of Taipei is a museum that chronicles Taipei's development. The museum features exhibitions on Taipei's natural history and cultural heritage, as well as interactive installations that invite visitors to explore Taipei's future development. Visitors will come away from the museum with a wider appreciation of Taipei.

The highlight of the Discovery Center of Taipei, the Discovery Theater, has over 600 square meters of space, a 360-degree projection screen, and a revolving platform. Unlike static surround theaters, the Discovery Theater is a “people first” dynamic theater that reflects the real environment people see in everyday life. Sliding screens, models, 3D projection, and special lighting effects etc. create a visual space with a futuristic feel. Four films are regularly shown, namely Yeah! Taipei, Moments in Taipei, The Occurrence of Taipei, and Fascinating Taipei. Viewers can learn about Taipei, past and present, from the interesting dialogue and feel the stunning power of the surrounding images. The films offer a precious experience that should not be missed.

Website: <https://discovery.gov.taipei/en>

Address: No.1, City Hall Rd., Taipei City (West Entrance of Taipei City)

MRT: Take the Bannan Blue Line to Taipei City Hall Station. Exit 2, and walk along the Route for Taipei City Hall for about 7 minutes.

Opening Hours: Tuesday-Sunday 09:00-17:00

Free admission



Taipei Confucius Temple & Dalongdong Baoan Temple

Taipei Confucius Temple

The Taipei Confucius Temple is modeled after the original Confucius Temple in Qufu, China. In keeping with the sober spirit of Confucianism, the building is appropriately austere. Visitors also won't find the spring couplets common at other types of temples. Some say this is because it would be rude to display the writing of another in a temple dedicated to the Sage. Among the Confucius temples in Taiwan, Taipei's is the only one adorned with southern Fujian-style ceramic applique. At the main hall of the temple one can see a black plaque with gold lettering that reads "Educate without Discrimination." Every year on September 28, a grand ceremony with traditional music and stylized dancing is held at the temple in honor of Confucius.



Website: www.tctcc.taipei/en-us/index.htm

Address: No.275, Dalong St., Datong District, Taipei City

MRT: Taking the Red Line and reach YuanShan Station, it will take 10 minutes to the temple by walking from the station.

Opening Hours: Tuesday-Sunday 08:30-21:00

Free admission

Dalongdong Baoan Temple

Located at the confluence of the Tamsui and Keelung rivers, DaLong Cave (Longdong) developed very early. The center of worship here is Bao-an Temple, built in 1825. This is a large temple, and its construction was different; in addition, all of the wood and stone materials—and even the artisans—had to be brought over from mainland China. For these reason, the temple required a full quarter-century to complete.

This temple features the usual dragon pillars, and also a pair of stone lion that are not so usual. Normally, of the two lions (one male, one female) that guard a temple, the male has an open mouth and the female a closed mouth; here, however, both have open mouths. It is said that they are not lions at all but a "humane beast" and a "law beast," stationed there as an appeal to respect the law and carry out good government.



Website: <https://www.baoan.org.tw/?&lang=en>

Address: No. 61, Hami St., Datong Dist., Taipei City

MRT: Taking the Red Line and reach YuanShan Station, it will take 10 minutes to the temple by walking from the station.

Opening Hours: Monday-Sunday 06:30-21:00

Free admission

Easy Cycling Tour along Taipei's Riverside Bikeway

Riverside Cycling with Ease and Pleasure

- Keelung Riverside Bikeway (about 47 KM)
- Tamsui Riverside Bikeway (about 19.6 KM)
- Jingmei Riverside Bikeway (about 15.2 KM)
- Xindian Riverside Bikeway (about 9.2 KM)
- Shuangxi Riverside Bikeway (about 7.9 KM)

Detail Information:

www.travel.taipei/en/must-visit/riverside-bikeway



YouBike

With an electronic managerial system, YouBike provides rental services throughout the city. The user may rent one bike in a place and return it in another. YouBike makes up for what lacks in the greater public transport system. It is hoped that, with YouBike, people will want to take public transport more. YouBike promotes an environment-friendly lifestyle and a green commute culture.

Website: <https://en.youbike.com.tw/region/main/>

Rental Rate:

- TWD\$ 10 / Every 30 minutes in 4 hours
- TWD\$ 20 / per 30 minutes in 4-8 hours
- TWD\$ 40 / per 30 minutes for over 8 hours

How to Rent a Bike:

- Paying by Credit Card (at the kiosk and choose a bike)
- Paying by Easy Card / iPASS Card (Sign up as the member and swipe the card on the sensor dock)



Photo credit: www.travel.taipei
www.taiwan.net.tw

Taipei Sightseeing Bus

Taipei Sightseeing Bus

Taipei Sightseeing gives tourists a different perspective when they travel around Taipei. Bus runs along two routes, both leaving at Taipei Main Station Exit M4. Services provided on the bus include Wi-Fi internet and a tour guide headset in English, Chinese, Japanese, Korean and Thai. Discover Taipei's most iconic sights.

Two routes can be chosen. The blue line travels north-south and will take you to sites like Ximending, Chiang Kai-shek Memorial Hall, and the National Palace Museum. The red line, goes east-west and introduces you to spots like Taipei 101 and Sun Yat-sen Memorial Hall. While cruising around, your personal audio guide will share fun facts about the city's culture and history. Enjoy Taipei's top attractions all in one day, conveniently with the Taipei City. On average, red route takes 85 minutes, blue route takes 90 minutes.



此時刻表自2022年02月25日開始執行		臺北市雙層觀光巴士紅線預估到站時間																		This timetable has been valid since Feb. 25, 2022	
		Taipei Sightseeing Bus Red Route Estimated Timetable																			
紅線	臺北車站	捷運西門站	小南門(往南)	捷運龍山寺站	小南門(往北)	中正紀念堂	信義永康街口	捷運大安森林公園站	捷運大安站(信義)	信義敦化路口	信義通化街口	101國際購物中心	松壽路口	捷運市政府站	捷運國父紀念館站	捷運忠孝敦化站	頂好市場	捷運忠孝復興站	華山文創園區	臺北車站	
	Taipei Main Station MRT Exit M4	MRT Ximen Station	Xiaonanmen (South)	MRT Longshan Temple Station	Xiaonanmen (North)	C.K.S. Memorial Hall	Xinyi & Yongkang Intersection	Daan Forest Park Sta.	MRT Daan Sta. (Xinyi)	Xinyi and Dunhua Intersection	Xinyi & Tonghua Intersection	Taipei 101	Songshou Rd. Entrance	MRT Taipei City Hall Sta.	MRT Sun Yat-Sen Memorial Hall Sta.	MRT Zhongxiao Dunhua Sta.	Dinghao Market	MRT Zhongxiao Fuxing Sta.	Huashan Cultural and Creative Industries Park	Taipei Main Station MRT Exit M4	
	1	2	3	4	5	6	7	8	9	10	11	12	13	14	15	16	17	18	19	1	
01	09:10	09:12	09:13	09:19	09:26	09:29	09:34	09:39	09:41	09:42	09:43	09:46	09:49	09:54	09:56	09:59	10:00	10:01	10:06	10:11	
02	14:50	14:52	14:53	14:59	15:06	15:13	15:16	15:20	15:22	15:26	15:30	15:34	15:37	15:42	15:44	15:47	15:48	15:49	15:54	15:59	
03	18:40	18:42	18:43	18:49	18:56	19:03	19:06	19:10	19:12	19:16	19:20	19:24	19:27	19:32	19:34	19:37	19:38	19:39	19:44	19:50	

此時刻表自2022年02月25日開始執行		臺北市雙層觀光巴士藍線預估到站時間																		This timetable has been valid since Feb. 25, 2022	
		Taipei Sightseeing Bus Blue Route Estimated Timetable																			
藍線	臺北車站	捷運北門站	延平一號(南京)	圓環(鈕扣街)	圓環(南京)	捷運中山站(志仁高中)	國賓飯店	大同公司	美術館	圓山飯店	銘傳大學	士林官邸	故宮博物院(正館)	士林官邸	劍潭站	圓山飯店	美術館	大同公司	國賓飯店	臺北車站	
	Taipei Main Station MRT Exit M4	MRT Beimen Station	Yanping Stop 1 (Nanjing)	Traffic Circle (Button St.)	Taipei Circle (Nanjing)	MRT Zhongshan Station	The Ambassador Hotel	Tatung Company	Taipei Fine Art Museum	Grand Hotel	Ming Chuan University	Shilin Official Residence	National Palace Museum	Shilin Official Residence	MRT Jiantan Station	Grand Hotel	Taipei Fine Art Museum	Tatung Company	The Ambassador Hotel	Taipei Main Station MRT Exit M4	
	1	2	3	4	5	6	7	8	9	10	11	12	13	14	15	16	17	18	19	1	
01	10:50	10:52	10:56	10:56	10:57	11:01	11:06	11:08	11:10	11:12	11:21	11:24	11:31	11:38	11:42	11:47	11:50	11:52	11:55	12:04	
02	13:10	13:12	13:16	13:16	13:17	13:21	13:26	13:28	13:30	13:32	13:41	13:44	13:51	13:58	14:02	14:07	14:10	14:12	14:15	14:24	
03	16:30	16:32	16:36	16:36	16:37	16:41	16:46	16:48	16:50	16:52	17:01	17:04	17:11	17:18	17:22	17:27	17:30	17:32	17:35	17:44	

Website: <https://www.taipeisightseeing.com.tw/en>

Fare:

- 4 Hours Pass: TWD\$300
- Daytime Tickets (09:10-18:00): TWD\$500
- 24 Hours Pass: TWD\$600
- 48 Hours Pass: TWD\$1000

Highlights

- Audio guides in five languages
- Water spray cooling tunnel
- Tour with 360° panoramic view
- Free wifi on board
- AC and open-air seats on second story deck